



INSTALLING BARN MATS YOURSELF

Everything you need to know  
about fitting and installing





The KRAIBURG barn mats create the ideal conditions for the health and well-being of your cows. The soft floor provides ergonomic and safe footing and helps prevent hoof and joint disease. An investment that brings more than just swift returns!

Let us take a look at the installation of KRAIBURG barn mats. Which tools do you need to install the rubber mats? How can you achieve the best possible result? We will guide you step by step, revealing valuable tips and tricks that facilitate laying rubber barn mats.

## Preparation: Please consider the following before installing barn mats

Before you start laying the rubber mats in your barn, always check the conditions on site.

### Conditions on site:

It is important that the concrete floor is suitable for laying barn mats and that the dimensions of the free stalls are up to standard. For more detailed information, please refer to the **installation instructions** enclosed with your product.

### The temperature window

Prior to installation, choose the ideal time for laying the rubber mats. A key criteria is: The temperature! As with all floor installation work, maintaining a temperature window plays a paramount role. This is the only way to ensure that the single mats can adeptly adapt to temperature fluctuations and lay seamlessly next to each other.

### The right preconditions to use the temperature window:

- The rubber mats maintain a consistent temperature of between min. 5 °C and max. 30 °C.
- At temperatures below 5 °C, it is imperative to store the barn mats in the building for a few days to allow them to acclimatize and reach the required installation temperature.



## The tools:

The rubber mats and connecting bars may need to be cut to size. They are **anchored to the concrete floor with plugs**. Standard equipment, such as a **yard stick / tape measure and marking pens**, is required for measuring and marking (tip: Yellow or white Edding 4000 deco marker).

**Tip:** Use a chalk line to mark long lines (e.g. for positioning mats).

Furthermore, you will require the following tools:

### Cutting mats:

- Carpet cutter
- Sharp kitchen knife
- Jigsaw with a serrated saw blade (for cardboard/soft materials)
- Keyhole saw (standard sizes: 83 mm, 102 mm)

### Cutting connecting bars:

- Jigsaw with a saw blade for wood and plastic
- Handsaw
- A good option is a circular saw

**Tip:** Use old jigsaw blades, grind saw teeth smooth to create a sharp blade.

### Masonry drill

- Diameter: 10 mm for 10 mm plug

### Minimum drilling length:

- 100 mm for 80 mm plug
- 120 mm für 100 mm plug
- 140 mm für 120 mm plug

### Installing nail and framing plugs:

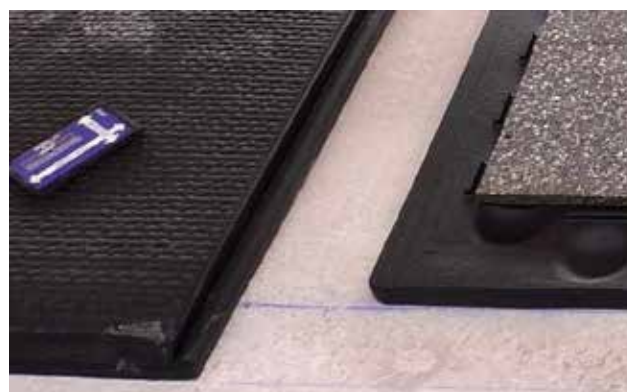
- Hammer (approx. 800 g is usually sufficient)
- Size 13 box wrench or electric screwdriver
- Size 13 socket and ratchet

## Installing rubber barn mats: Three steps to the perfect result

Please note: Correct installation may vary due to the individual conditions on site. In the following steps, we will try to provide you with lots of general tips to ensure the optimal installation of our rubber mats. However, KRAIBURG cannot be held liable for correct installation.

### Step 1: Measuring and positioning

Gently position the rubber mats without applying excessive pressure or force, paying meticulous attention to **proper spacing and joint dimensions**.



**Tip:**

Pliers can prove invaluable when positioning or maneuvering large mats into place.



## Step 2: Cutting and adapting

To ensure a clean and accurate cut, choose **a cutter or a jigsaw**, depending on the type of mat. Moisten the blade before cutting so it glides better. When cutting, bend the mat along the cut and pull it apart slightly. A wooden board can also be used (place a board underneath the mat before scoring and cutting it).

**Tip:** Grasp small pieces with pliers to pull them apart.



## Step 3: Fixing

To ensure a secure installation of rubber mats in your barn, it is imperative to always follow the **prescribed sequence**: Drill holes, insert plugs and finally drive or screw in the nails or screws along with washers. Ensure meticulous execution of the tasks for stable and long-lasting attachment of the mats!

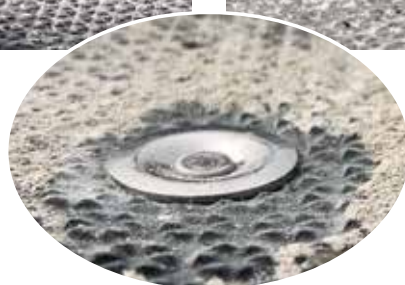
**Tip:** When drilling, remove drilling dust from the hole by regularly pulling out the drill bit.

### Important:

Be sure to fix the mats evenly and firmly in place. Drive or screw in the nail plugs or screws just enough to allow the heads to be gently countersunk within the mat. Excessively inserted anchors can lead to potential stresses or bulges within the mat.

**Tip:** To check correct fixing, run a flat metal object (e.g. a hammer) across the fixings. If you can still feel the fixings, insert them a little deeper.





## Further information:

*For more tips and advice, see our **videos**, along with the **installation instructions and manuals** provided with your product. We wish you lots of success when laying our rubber mats and hope our tips are helpful.*