

## For KRAIBURG rubber flooring on slatted floors

### Prerequisites:

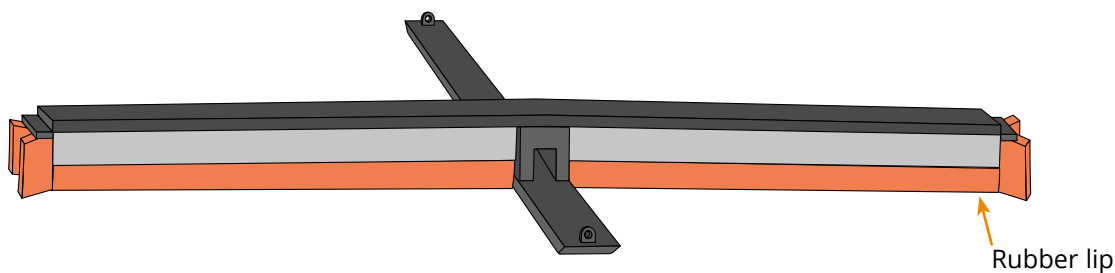


The walking area mats were installed according to the KRAIBURG installation instructions.

**Fundamentally:** Use scraper facilities especially developed for rubber flooring.

**Structural alterations:** Adapt scraper facilities in collaboration with the scraper manufacturer, according to the KRAIBURG guidelines for manure scrapers.

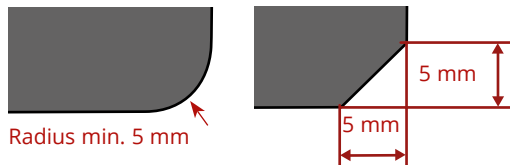
**Notice:** Only materials with a rubber/plastic or rather metal base can come into contact with the rubber mats, no abrasive materials, e.g. concrete.



### General prerequisites

#### ① Unsharpen the edges of the scraper parts

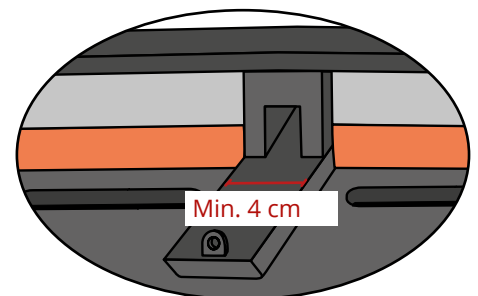
- All edges of non-elastic material that come into contact with the mats must be unsharpened! (chamfered 5 x 45° or rounded R5)
- Check scraper facilities for sharp edges caused by wear and tear!



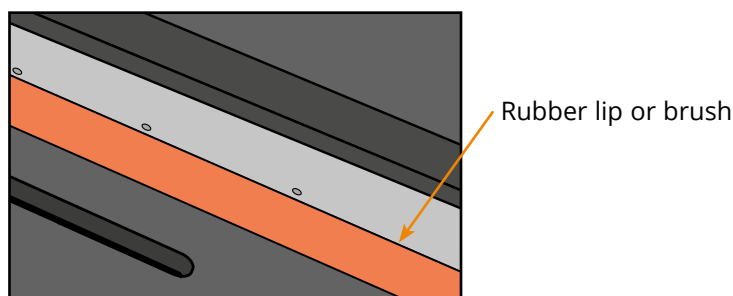
**! Important:**  
Regular maintenance!  
Check the scraper at least once a year!

#### ② Bearing pressure should be as low as possible

- Bearing surface of scraper parts: min. 4 cm wide
- With scraper facilities > 250 kg: consultation required! ☎



#### ③ Scraper must be equipped with a soft rubber lip or brush



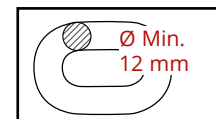
Example:



## Further scraper types

### Pulled scrapers:

- Set the deflection pulley higher according to mat thickness
- No abrasion protection needed for the mat, if:
  - a **rod steel link chain** measuring at least 12 mm in diameter is used
  - a plastic rope or plastic covered rope is used

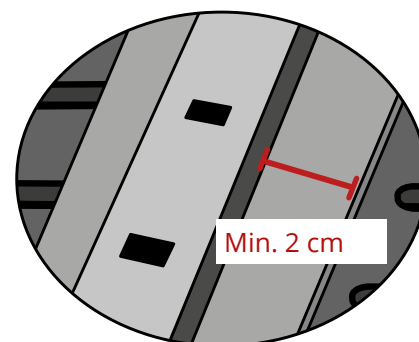
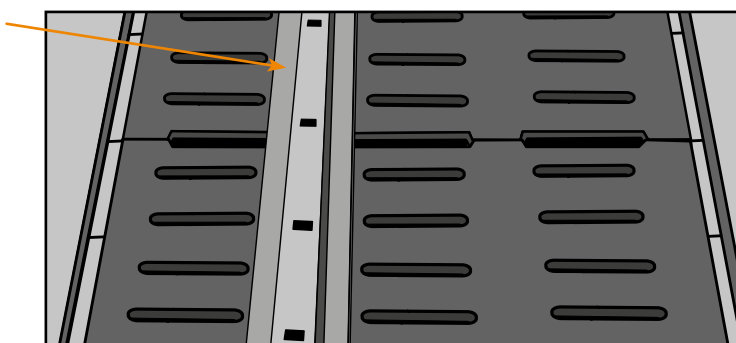


(steel ropes cannot directly lie on the rubber mat -> mat must be protected from abrasion by the rope)

### Hydraulic scrapers:

- Install the pull profile / the push rod on the mat
- Stabilize the system: place a wide flat steel underneath: - approx. 3 mm thick  
- min. 2 cm overlaying

Flat steel



### Example:



### Barn cleaning robots:

- Operate on KRAIBURG slatted flooring, if the main prerequisites are fulfilled (see above)

## Scraper adaptation - examples -

### Unsharpen the edges of the scraper parts



Bearing surface of side skid is rounded off

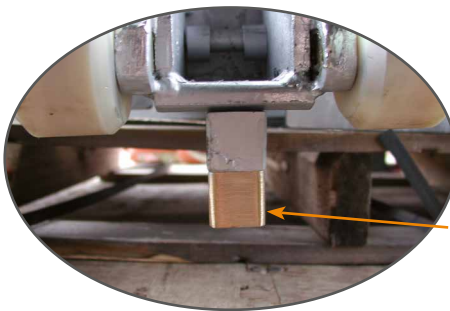


Side cleaning flap  
Attention: sharp edges! (-> round off!)

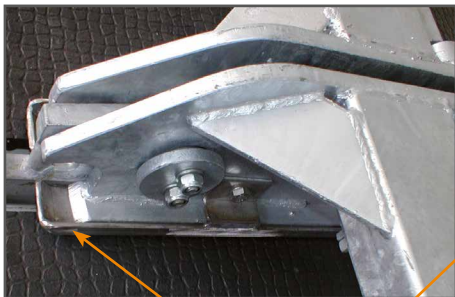
### Center bracket



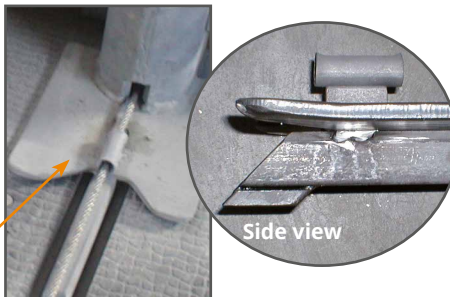
Center bracket rests on wide plastic rolls



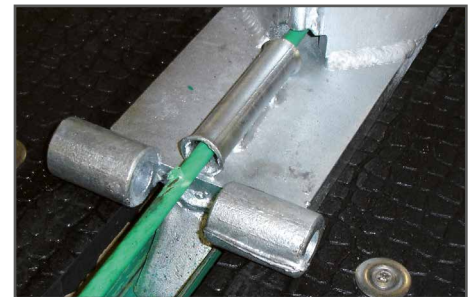
Guide underneath the center bracket set higher according to mat thickness



Wide bearing for the center bracket, bent up in skid form



Side view



Wide bearing for center bracket, welded on round bar

### Side skids



Side skids with round bar and wide bearing



Wide and bent up side skids, screwed on



Wide and bent up side skids

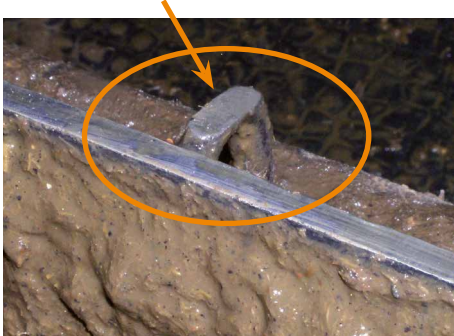
## Important: Regular maintenance

Even on rubber flooring scraper parts wear out, i. e. edges become sharp from grinding.

**!** Check scrapers at least once a year and grind any sharp edges round!

**Example:** Scraper wear on steel parts

Use on rubber after approx. one year:  
significant abrasion recognizable



**!** Scraper adaptation:  
1. Turn scraper over and check it  
2. Round off sharp edges with an angle grinder