

# All-in-one

- ✓ animal-friendly softness
- ✓ optimized grip
- ✓ dry claws
- ✓ fewer emissions

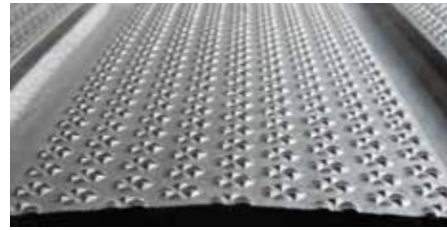


**NEW**

# profiDRAIN for drier walking areas



# profiDRAIN



optiGrip surface, curved with slope



stud profile

| **THICKNESS**

30 mm

| **SURFACE**

optiGrip, curved

| **SPECIALTY**| **Curved (cambered) surface with ca. 6 % slope towards the drain channel**

- › dissipates liquids quickly and reliably
- › promotes dry claws and thus supports claw health
- › reduces ammonia release through rapid urine draining (quick separation of faeces and urine)

(KTBL, 2022: Förderfähige Techniken zur Emissionsminderung in Stallbauten)

| **optiGrip surface with abrasive corundum**

- › promotes high slip resistance
- › supports the correct claw form through optimized claw abrasion

| **Claw-friendly soft walking surface provides pleasant walking comfort**| **Longitudinal channels collect draining liquids until the next cleaning**| **Simple installation: easy-to-handle single mats with proven fixing system**| **Suitable for both new construction and renovation**

## Scraper manure removal:

### The cleaning lip must match the drain channels in the rubber floor.

We work with well-known scraper manufacturers who already offer solutions. We will gladly support you with our long experience to coordinate the exact outline. In addition, KRAIBURG guidelines for manure scrapers also apply.

**Recommended scraper frequency for optimal emission reduction:** min. every 2 hours



### Important:

Check the scraper at least once a year and grind off the sharp edges!

## DIMENSIONS

### THICKNESS

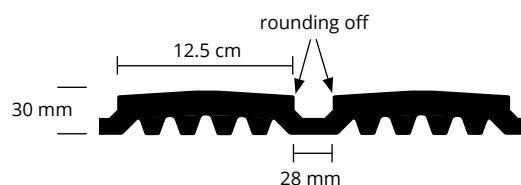
30 mm

### WIDTH

96 - 196 cm  
in 2-cm increments  
(> 196 cm on request)

### LENGTH

125 cm



### | KRAIBURG fixing system

- › stable and safe
- › rounded off and flush countersunk

## Your KRAIBURG dealer:



Please take notice of the corresponding KRAIBURG specifications and installation instructions with useful advice and tips. You will obtain these at your local KRAIBURG dealer or at [www.kraiburg-elastik.com](http://www.kraiburg-elastik.com).



The products presented here should only be used for the mentioned applications. Technical specifications are subject to alterations. Tolerances see [www.kraiburg-elastik.com](http://www.kraiburg-elastik.com). All sales are subject to our General Terms and Conditions. Legal basis is the German version of the document.