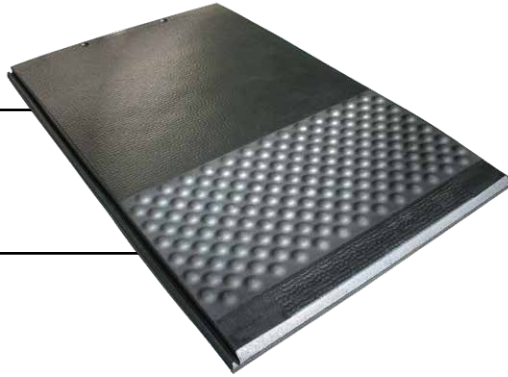


We market our products in many countries of the world. Again and again we and our partners in the field receive interesting reports from dairy farmers and scientists. We are happy to process this information to you and hope that you will find it helpful. Send us your suggestions – we count on them to help us give you a better product!

Many thanks, your KRAIBURG Team

ISSUE 51 - June 2017

THE NEW LYING MAT KRAIBURG TARSA: REPORT FROM PRACTICE



TARSA:

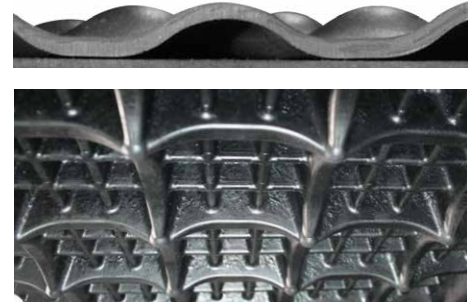
Comfort zone lying mat with pliant tarsal zone in the rear third of the mat

Cross section:



front end

air buffer profile
rear end



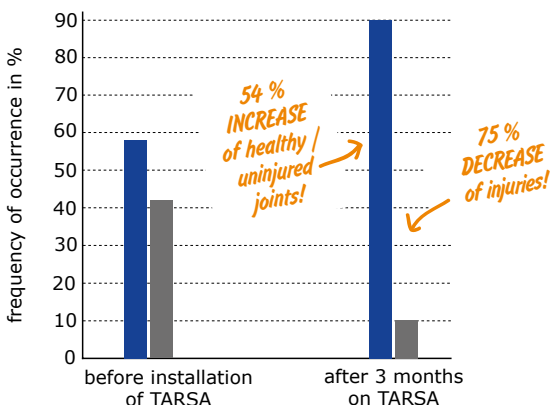
Benefits of the front section:

- proven 3-layer structure
 - ▶ ensures optimal and permanent softness for every load condition
- pebbled surface for good slip resistance

Initial results from tests¹⁾

TARSA: assessment of carpal joints

- healthy / uninjured joints
- injuries (skin abrasions / swelling / impact on joints)



positive effect on carpal joints:
considerable decrease of carpal findings

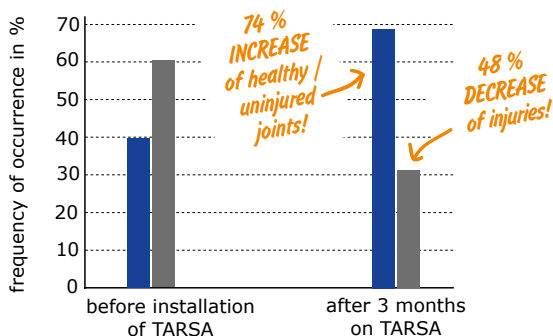
Benefits of the specially designed tarsal zone in the rear third of the mat:

- pressure relief for sensitive tarsal joints when lying down
- better air circulation keeps the skin drier
- even small amounts of litter are held in place
- improved sure-footedness, especially when getting up and when leaving the cubicle
- integrated soft slope to rear edge promotes drying off

Initial results from tests¹⁾

TARSA: assessment of tarsal joints

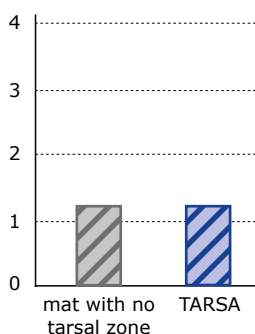
- healthy / uninjured joints
- injuries (skin abrasions / swelling / impact on joints)



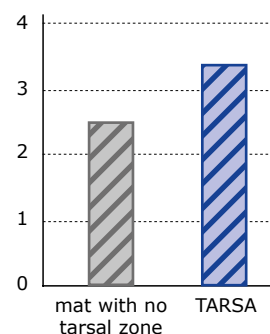
positive effect on tarsal joints: steady improvement in joint health

Cleanness and amount of litter in comparison

Degree of soiling 9 hours after cubicle maintenance
(0=clean, 4=very dirty)



Litter remaining 9 hours after cubicle maintenance
(0=none, 4=very much)



litter is held better on TARSA with the same cleanness

Tip: Chopped and milled straw have proved themselves.

Operation Niedermayer, Prien, DE



PROFILE:

- approx. 50 dairy cows
- elevated cubicles with TARSA

Anton Niedermayer, Prien, Germany, has a dairy farm with 50 cows. In September 2015 he renovated his cubicles and covered them with TARSA mats.

"In the beginning I was very sceptical... Can the tarsal zone be cleaned easily? Will the cows like the mats or are they "uncomfortable?" But now I say: SUPER! Super clean and the cows really like the mats. Joint health has developed positively and the sure-footedness, especially when getting up, is striking!"



you will find **further** interesting **practical experiences** at:
www.kraiburg-elastik.com

Source:

¹⁾ Huber R.: „Technologischer Vergleich zweier Komfortliegematten für Hochboxen im Hinblick auf Gesundheitsmanagement und Ethologie“, 2016

The new lying mat KRAIBURG TARSA: Report from practice - 06/2017