

KRAIBURG maxiBOARD

Prerequisites:

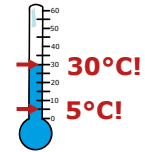


rubber cover in the cubicles is already installed or positioned correctly

concrete area:

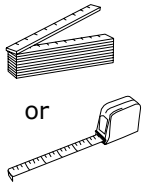
- no holes
- no elevations

maxiBOARDs:
even temperature:
min. 5° C to max. 30° C
(store according to initial temperature)

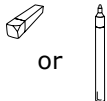


You will need this:

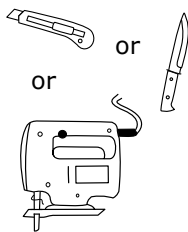
measuring:



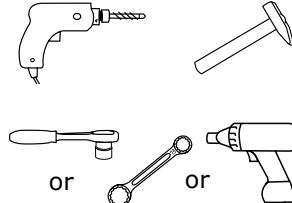
marking:



cutting:



drilling and installing:



KRAIBURG fastening elements:

for 3 cm mats / without plastic board:

- framing plugs \varnothing 10 x 100 mm with
- hexagon screw (SW 13) - A2
- washer \varnothing 30 mm - A2

for 6 cm mats / with plastic board:

- framing plugs \varnothing 10 x 135 mm with
- hexagon screw (SW 13) - A2
- washer \varnothing 30 mm - A2

additionally for 6 cm mats:
plastic board (height 3 cm)



⚠ When installing lying mat system and maxiBOARD together, please note:

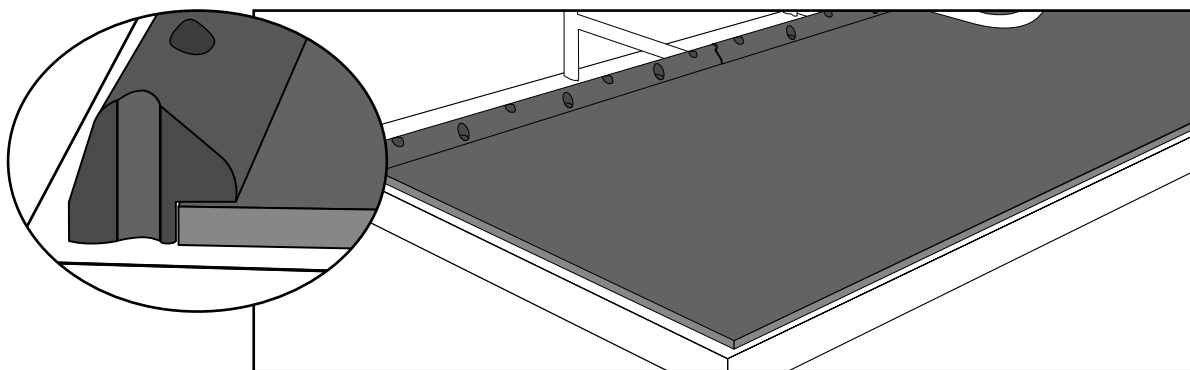
Initially follow the installation instructions for the lying mat system.

BUT: fixing of the front mat edge coincides with fixing of the maxiBOARDs. Mat and maxiBOARD are fixed at the same time!

Exception: first completely fasten the **WELA / WELA Puzzle / WELA LongLine** cubicle cover, and then install maxiBOARDs.

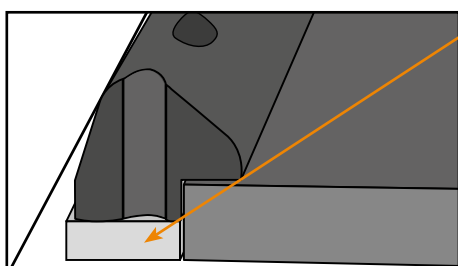
1 Position maxiBOARDs

fit the profiles into each other and move them loosely flush to the mat's edge



⚠ Do not press!

Use of plastic boards as shim (for mats with 6 cm thickness):



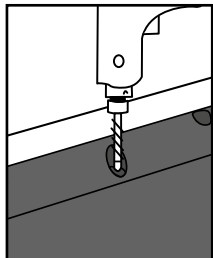
in order to heighten the maxiBOARDs,
shim with plastic boards



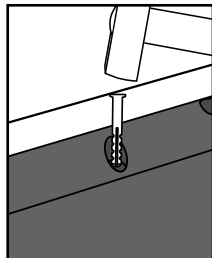
② Fasten

- ! For 3 cm mat thickness / without plastic board: framing plugs \varnothing 10 x 100 mm
 For 6 cm mat thickness / with plastic board: framing plugs \varnothing 10 x 135 mm

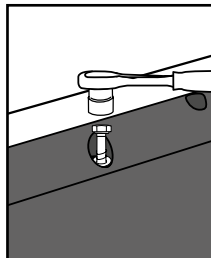
fasten maxiBOARDS at the pre-fabricated fastening points:



drill



pound the plastic plugs in flush



fasten screws and washers until they are seated evenly fast; **do not overtighten!**

! Use every fastening hole!

! **Important:**
 seal the drilled hole with the plastic plug immediately after drilling (to avoid entry of drilling dust), do not drill the next hole till then