

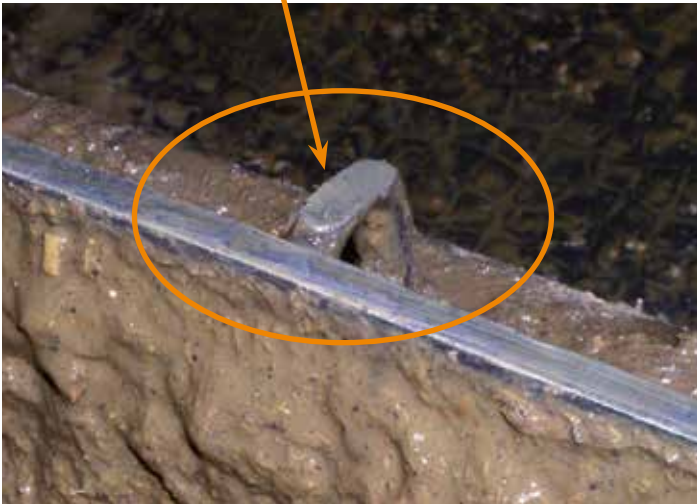
Important: regular maintenance

Even on rubber covers scraper parts wear out, i. e. edges become sharp from grinding.

! Check the scraper **at least once a year** and grind off the sharp edges!

Example: scraper wear on steel parts

use on rubber after approx. one year:
significant abrasion recognizable



! **Scraper adaptation:**

1. turn scraper over and check it
2. unsharpen sharp edges with an angle grinder

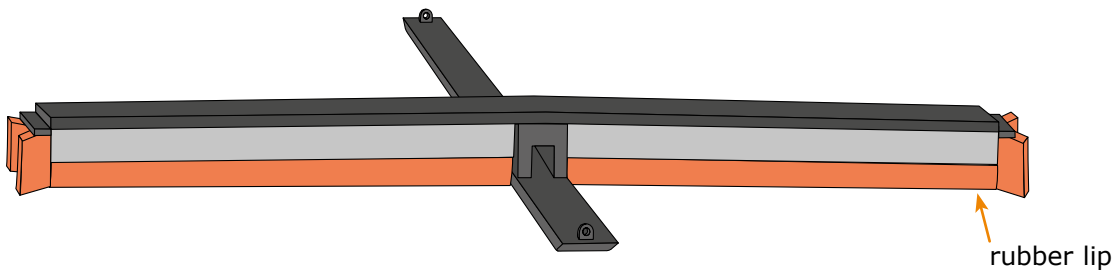
For systems with KRAIBURG rubber coverings on slatted floors

Prerequisites:



The walking area mats were installed according to the KRAIBURG installation instructions.

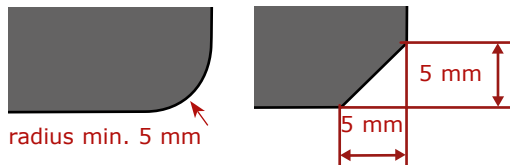
- fundamentally:** use scraper especially developed for rubber floors
- structural alterations:** adapt scraper facilities in collaboration with the scraper manufacturer, according to the KRAIBURG guidelines for manure scrapers
- attention:** only materials with a rubber/plastic or rather metal base can come into contact with the rubber mats, no abrasive materials, e.g. concrete



General prerequisites

① Unsharpen the edges of the scraper parts

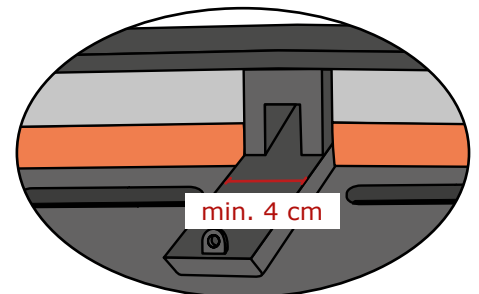
- all sharp edges of non-elastic material coming in contact with the mats must be made blunt (chamfer 5 x 45° or curve R5)
- check scraper facility for sharp edges, caused by wear and tear



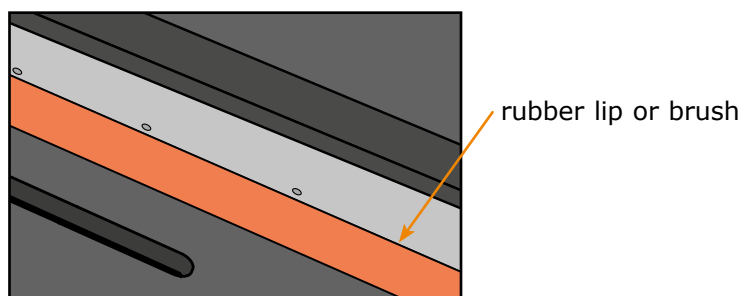
! Important:
regular maintenance!
check the scraper at least once a year!

② Bearing pressure should be as low as possible

- bearing surface of scraper parts: min. 4 cm wide
- with scraper facilities > 250 kg: consultation required! ☎



③ Scraper must be equipped with a soft rubber lip or brush



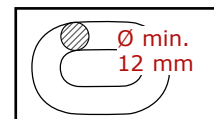
example:



Further scraper types

► Pulled scrapers:

- set the deflection pulley higher according to mat thickness
- no protection from abrasion for the mat needed, if:
 - a **rod steel link chain** with at least a 12 mm diameter is used
 - a plastic rope or plastic covered rope is used

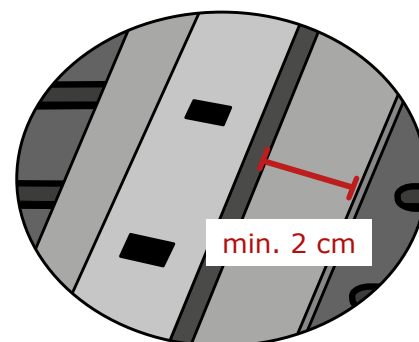
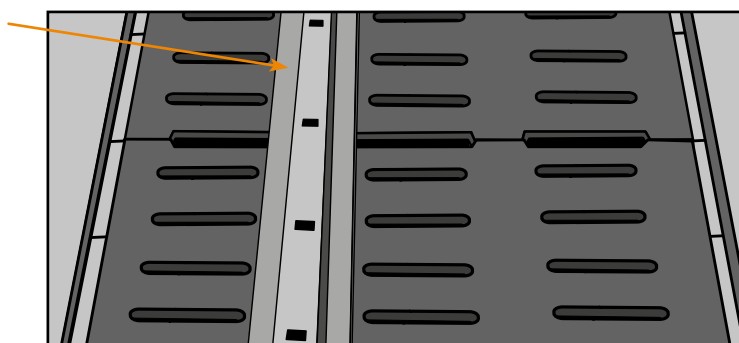


(steel ropes cannot directly lie on the rubber mat -> mat must be protected from abrasion by the rope)

► Hydraulic scrapers:

- install the pull profile / the push rod on the mat
- stabilize the system: place a wide flat steel underneath:
 - about 3 mm thick
 - min. 2 cm overlaying

flat steel



example:



► Cow house cleaning robots:

- operate on KRAIBURG rubber coverings on slatted floors, if the main prerequisites are fulfilled (see above)

Scraper adaptation - examples -

► Unsharpen the edges of the scraper parts



bearing surface of side skid is rounded off

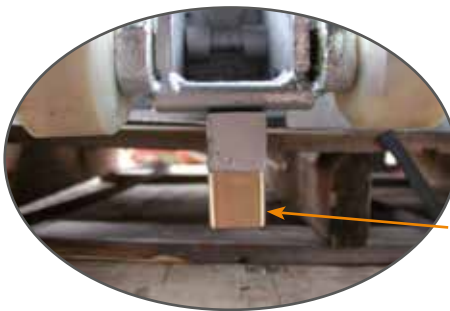


side cleaning flap
attention: sharp edges! (-> round off!)

► Center bracket



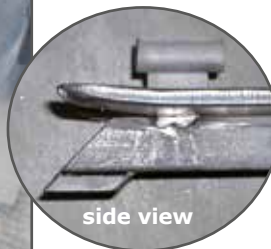
center bracket rests on wide plastic rolls



guide underneath the center bracket set higher according to mat thickness



wide bearing for the center bracket, bent up in skid form



side view



wide bearing for center bracket, welded on rod iron

► Side skids



side skids with rod iron and wide bearing



wide and bent up side skids, screwed on



wide and bent up side skids