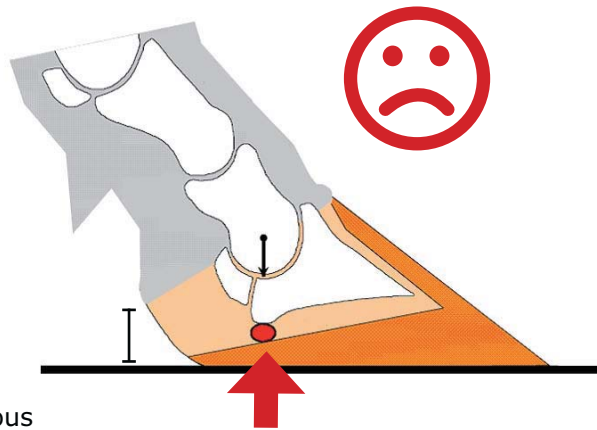


How does pediKURA® system benefit claw health?

The system pediKURA® (i.e. 20 % of the complete floor is covered with pediKURA®) ensures optimal softness + abrasion. It supports the ideal claw form and with it the claw health.

Unfortunately often seen in animal houses:

Claw too long

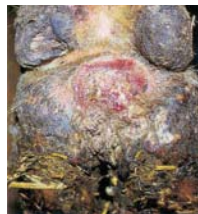


Bulbs too low

- > bulb section in soil
- > higher risk for infectious claw diseases (50 % of all claw damages)

Critical: overload!

- > higher risk for mechanical-traumatic claw diseases (50 % of all claw damages)



Digital Dermatitis



Interdigital Dermatitis



Sole ulcer



Contusion



Laminitis

The solution: softness + abrasion = pediKURA®

Brings conditions from nature into the cubicle house: in **pasture sandy constituents** in the **elastic soil** ensure the **ideal abrasion**.



Hard floors are no solution!

Ideal claw form

