

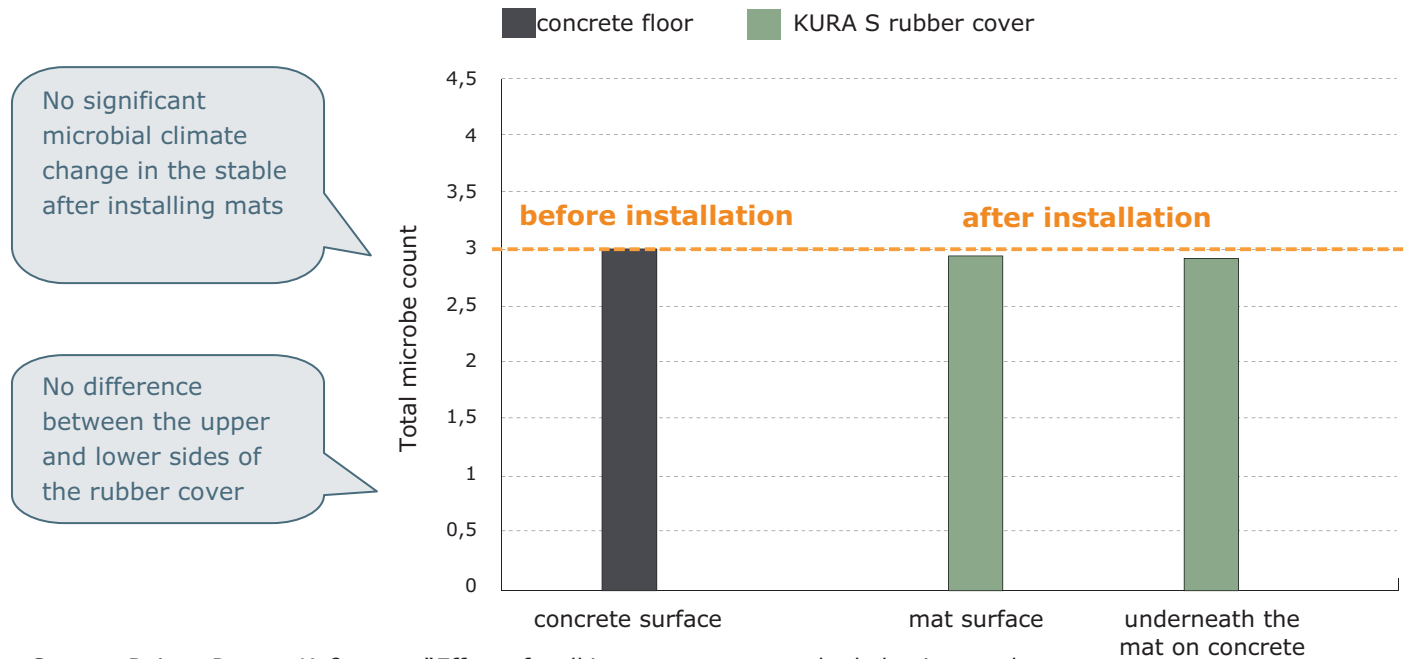
We market our products in Europe, the USA und many other countries around the world. The knowledge we gain through this is compiled and given back to you in the form of helpful tips. Send us your suggestions - we count on them to help us give you a better product!

Thank you very much from your KRAIBURG research & development

## HYGIENE ON / UNDERNEATH KURA-MATS

### In the walking alley:

KURA S rubber cover compared to a concrete slatted floor



No significant microbial climate change in the stable after installing mats

No difference between the upper and lower sides of the rubber cover

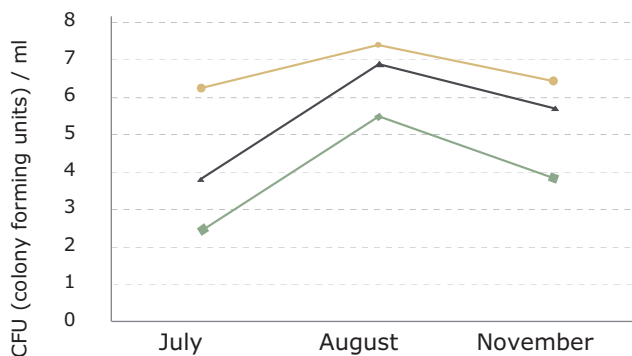
Source: Reiter, Partes, Koßmann: "Effect of walking area covers on the behaviour and hygienic conditions of dairy cows", Germany, 2006 (Einfluss von Laufflächenbelägen auf das Verhalten und die hygienischen Bedingungen bei Milchkühen)

### In the parlour:

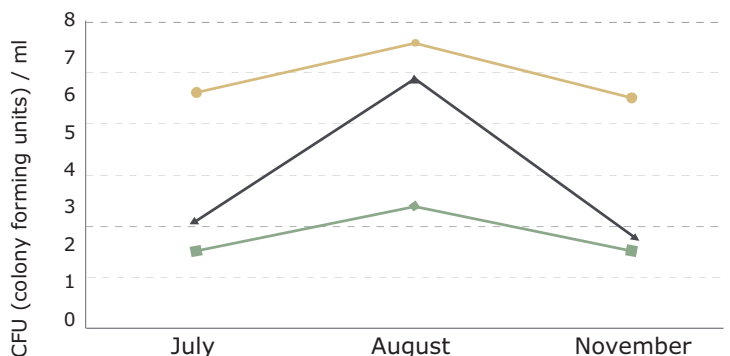
● Rubber beneath ▲ concrete ◆ rubber on top

The soiling underneath the mat had no effect on mat hygiene.

#### Development of total microbe count



#### Development in the number of enterobacteriaceae



The microbe count was always lowest on the rubber surface

Microbial stress increases and decreases seasonally. **An important aspect:** the lowest microbe counts are always on the mat surface.

Source: Bavarian Animal Health Service, Central Institute 2008 (Tiergesundheitsdienst Bayern e.V., Zentralinstitut)