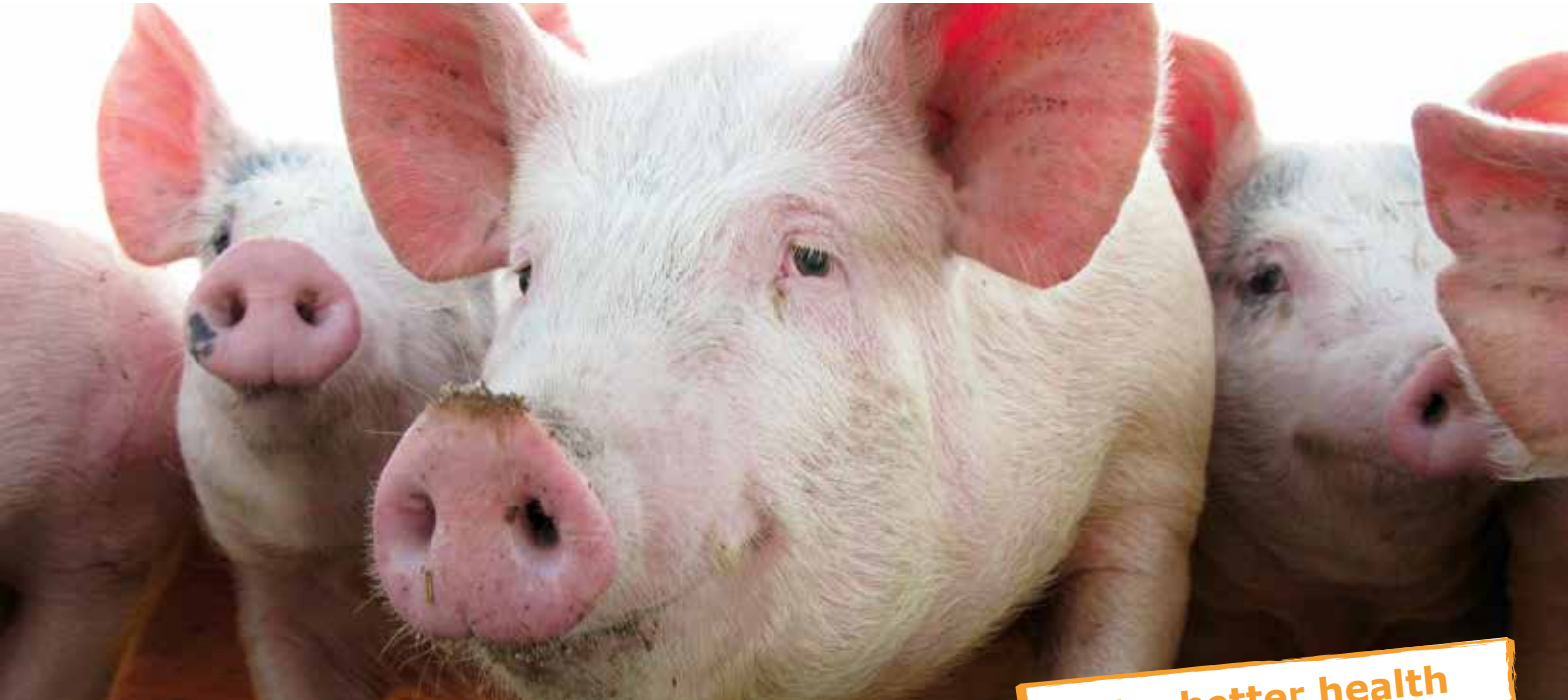


Rubber covers for floors in farrowing houses



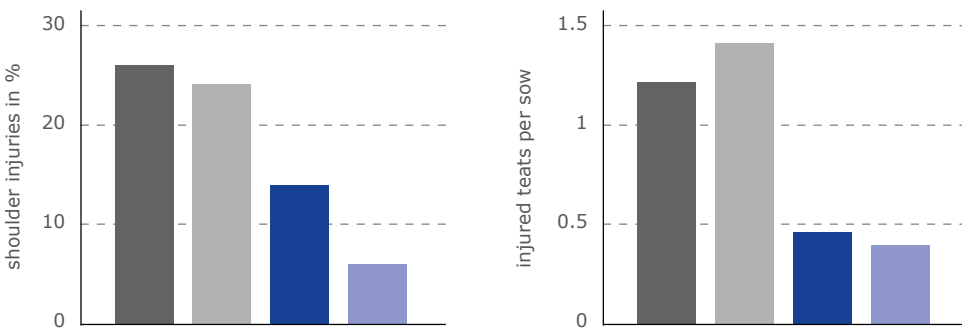
For better health and well-being!

Existing floors in farrowing houses are often too slippery and hard.

- with fear of slipping sows get up less
 - ▶ rearing performance gets worse
- increased crushing losses
- lying too long in one position increases the risk of shoulder ulcer formation
 - ▶ **inflammations and pain lower sow performance**

Shoulder and teat injuries: concrete and rubber in comparison

■ cast grid ■ plastic grid ■ PORCA fix 65 cm wide ■ PORCA fix 85 cm wide

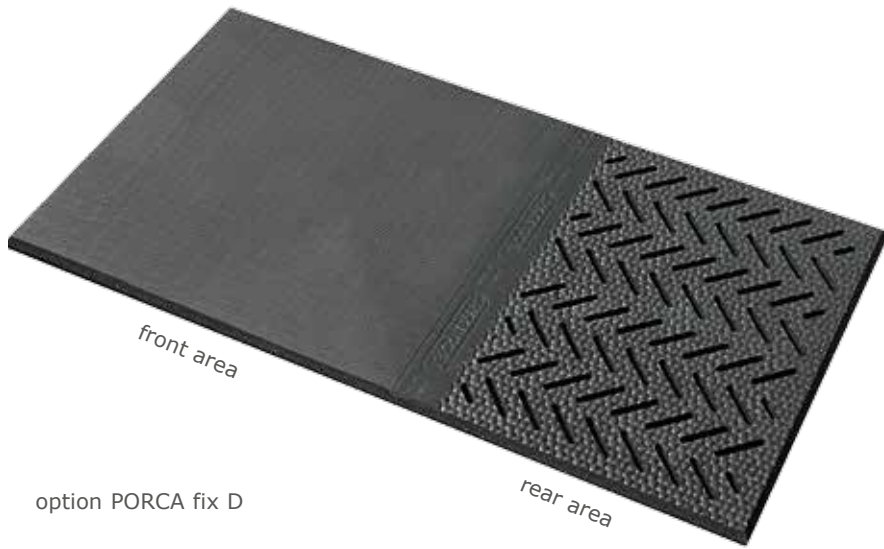


significantly reduced shoulder and teat injuries on rubber mats

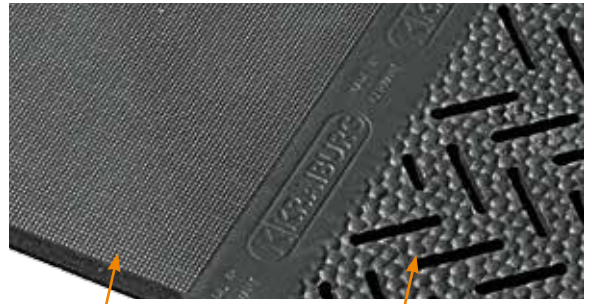
Source: BoKu Wien, 2012



PORCA fix



option PORCA fix D



front area: bite-optimized Protect-surface

rear area: pebbled profile surface



option PORCA fix U

- available in two options:
 - ▶ **PORCA fix D:** perforated for drainage in the rear area
 - ▶ **PORCA fix U:** not perforated in the rear area
- front area with bite-optimized Protect-surface
- long lifetime
- is easy on the sensitive shoulder section
- reduces the danger of teat injuries
- improved slip resistance
- chamfered animal-friendly on all edges
- cushions piglets' carpal joints during suckling
- easy to clean and disinfect





Dimensions: **thickness:** 2 cm **lower side:** smooth

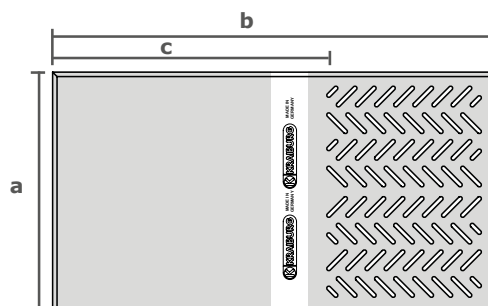
PORCA fix D (perforated in the rear):

slit width: 11 mm

width (a):	total length (b):	total area (a x b):	length of unperforated area (c):	unperforated area (a x c):	slit percentage:
65 cm	120 cm	0.78 m ²	74.5 cm	0.48 m ²	7 %
65 cm	125 cm	0.81 m ²	100.5 cm	0.65 m ²	3 %

PORCA fix U (unperforated):

width (a):	total length (b):	total area (a x b):
65 cm	120 cm	0.78 m ²



Please consult your official vet to check the perforated/unperforated areas, as legal requirements vary.

special dimensions on request

PORCA KN

- simple mat with no Protect-surface

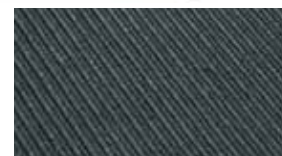
Dimensions:

thickness:	width:	length:
18 mm	65/70/80 cm	110/120 cm
	110/120 cm	175 cm

special dimensions on request



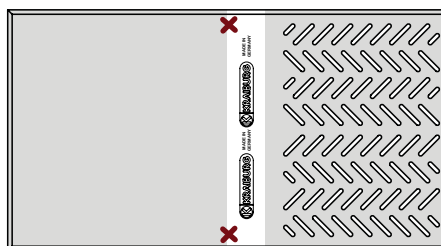
pebbled profile surface



sturdy groove profile on lower side

Installation:*

- ▶ mat must be secured so that it cannot slide out of place (e. g. long screws, slat anchors fitting to the floor, ...)
- ▶ as a rule, 2 fixings in the middle of the mat will suffice
- ▶ detaching and cleaning are not hindered



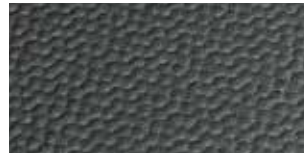
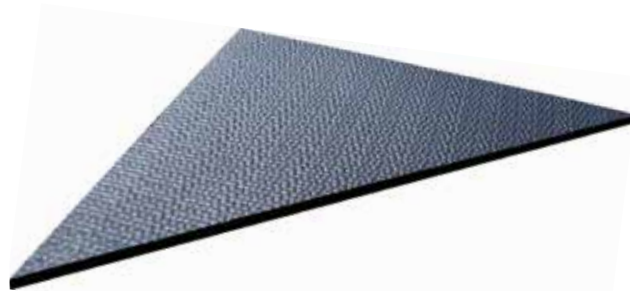
e. g. long screw with washer secured with a nut from underneath

*Please take notice of the corresponding KRAIBURG specifications and installation instructions with useful advice and tips. You will obtain these at your local KRAIBURG dealer or at www.kraiburg-elastik.com.



PORCA nest

- rugged and durable
- good storage and distribution of radiated heat
 - ▶ energy losses are reduced
- easy to clean and to disinfect
- easy retrofitting, even on existing grids
- creates a continuous surface in the piglets' lying area (EU directive)
- no draught from underneath
- piglet nest can easily be enlarged when litters are bigger
- as a rule no fixing required due to mat's weight (the mat must be unreachable for the sow)



pebbled profile surface



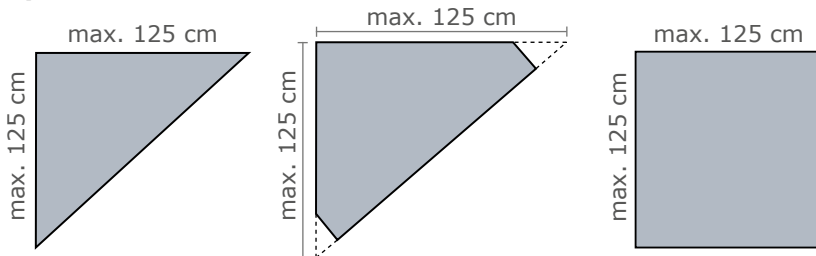
sturdy groove profile on lower side



Dimensions:

thickness: 18 mm **shape:** triangular/quadrangular/pentagonal
dimensions: variable, **maximum side length:** 125 cm

Examples:



Installation – easy and fast

The guidelines to correct installation can be found in the installation instructions!
 You will obtain these at your local KRAIBURG dealer or at www.kraiburg-elastik.com.



Tolerances

thickness: +3/-2 mm **length + width:** +/- 1.5 % (DIN ISO 3302-1 tolerance class M4)

The tolerances also apply within the mat and when installed.



KRAIBURG manufacturer guarantee

PORCA fix: 2 years

More detailed information is available on request.

The products presented here should only be used for the mentioned applications. Technical specifications are subject to alterations. All sales are subject to our General Terms and Conditions. Legal basis is the German version of the document.



English

03/2017

Your KRAIBURG dealer:

www.kraiburg-elastik.com

